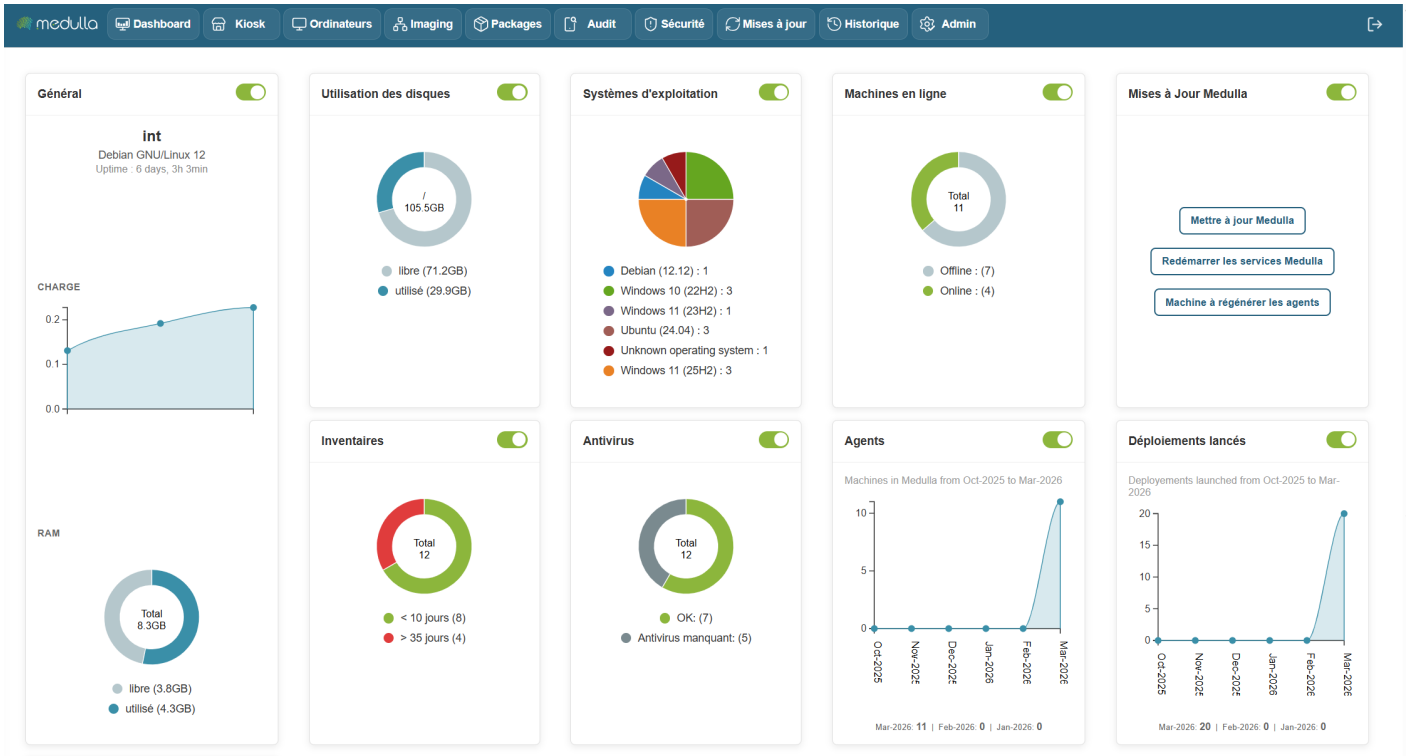


Dashboard



The Medulla dashboard allows you to monitor the real-time status of your infrastructure using customizable widgets. You can move, resize, and arrange the widgets as you wish. Each widget also has a button to show or hide it, depending on your needs.

Some widgets include dynamic charts for a better understanding of the data, updating in real time.

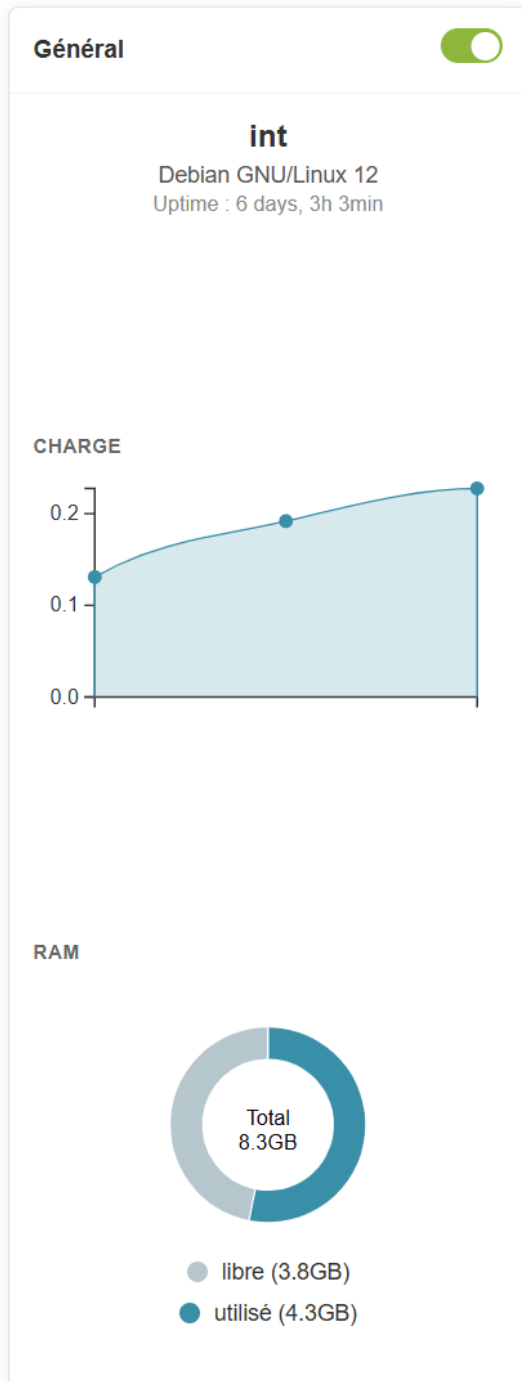
The following widgets allow you to create static groups directly so you can perform actions on them by clicking:

Inventory Widget, Operating System, Online Machines, Antivirus

Available Widgets

Widgets are organized by category and allow you to view various information about your infrastructure. Here are the main categories:

General



Information provided

- **Server name** (example: *devdemo.siveo.net on Debian GNU/Linux 12*)
- **Uptime** (time elapsed since the last system reboot)
- Total**RAM**, available RAM, and used RAM

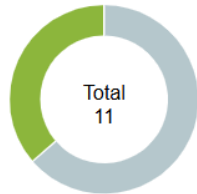
Customization

This widget can be moved wherever you like, and it is resizable to display more or less information depending on your needs. You can also hide it using the toggle if you don't need to see this information all the time.

Graphical representation

The General widget includes a **line chart** for **CPU usage** and a **pie chart** for **RAM usage**, allowing for a quick and intuitive visualization of system resource usage. The RAM chart shows the distribution of free and used space, while the CPU load chart helps you monitor server performance in real time.

Machines en ligne



● Offline : (7)
● Online : (4)

Online machines

Information provided

- Total number of online and offline machines.

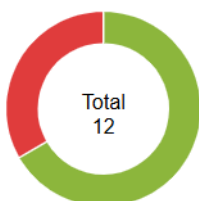
Customization

This widget can be moved and resized as you like. The toggle allows you to show or hide it according to your preference.

Graphical representation

Pie chart to visualize the distribution of online and offline machines.

Inventaires



● < 10 jours (8)
● > 35 jours (4)

Inventory

Information provided

- Total number of items in the inventory and those that haven't been updated in over 10 days.

Customization

The widget is customizable and can be moved and resized. You can also hide it if you don't need it.

Graphical representation

A **pie chart** displays the items in the inventory and highlights those requiring an update, providing an overview of the inventory's status

In summary, the **Dashboard** is your centralized hub for managing and monitoring the status of your IT infrastructure. It is designed to be **flexible and responsive**, providing an overview of the performance of your machines and resources, while allowing you to react quickly to any alerts or necessary updates.

With this set of tools and **graphical visualizations**, the Dashboard gives you optimal control to **manage your systems efficiently**, while providing a clear and detailed view of your entire IT environment.

Revision #1

Created 2026-04-30 07:22:05 UTC by Adrien Thaisse

Updated 2026-04-30 07:22:05 UTC by Adrien Thaisse