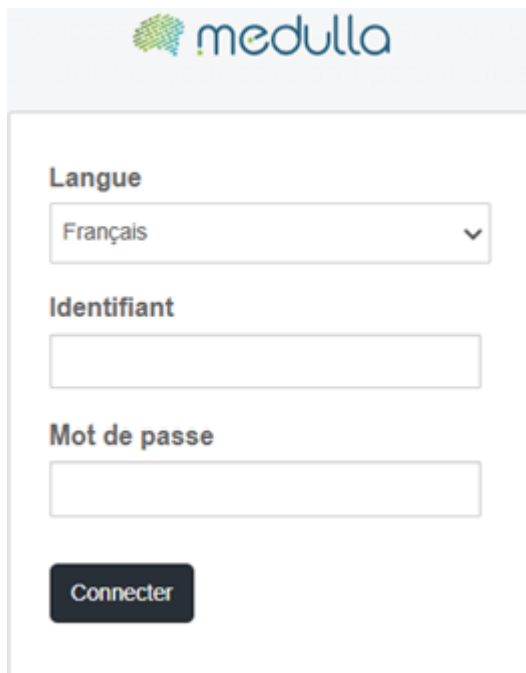


Chapter 2: First steps in Medulla

- [How to connect to Medulla](#)
- [Scoreboard](#)

How to connect to Medulla

The image shows the Medulla login interface. At the top left is the Medulla logo, which consists of a green brain icon followed by the word "medulla" in blue lowercase letters. Below the logo is a light gray rectangular box containing the login form. Inside this box, there is a label "Langue" above a dropdown menu showing "Français" with a downward arrow. Below that is a label "Identifiant" above a text input field. Then there is a label "Mot de passe" above another text input field. At the bottom of the form is a dark gray button with the white text "Connecter".

ed to log in with your credentials. This step guarantees the
d access.

Connection steps

Choose your language

On the login page, select the language of your choice from the drop-down menu. By default, the language is French, but you can change it if necessary.

Enter your ID

Enter the username or e-mail address provided when creating your account.

Enter your password

In the Password field, enter your personal password. Make sure it is spelled correctly: upper and lowercases are taken into account.

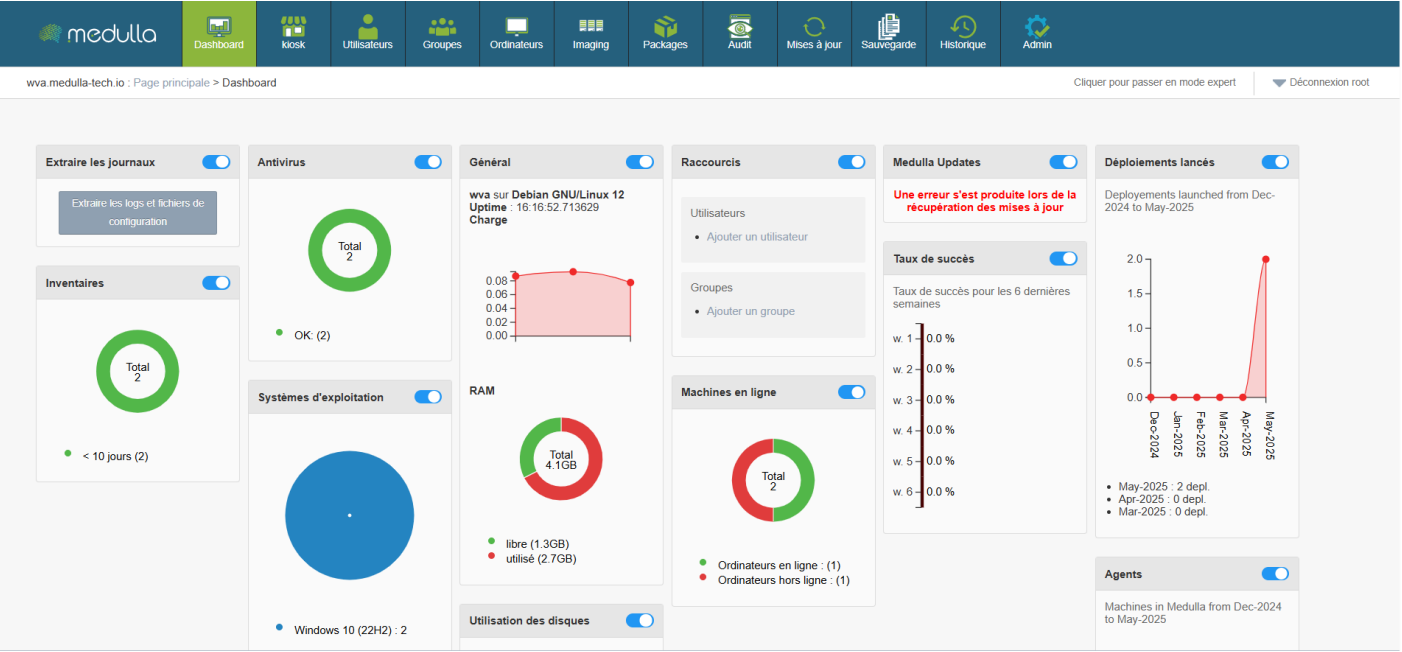
Validate connection

Click the "Log In" button to access your user space.

For security reasons, avoid saving your password on shared devices.

In case of connection problems, contact your organisation's technical support

Scoreboard



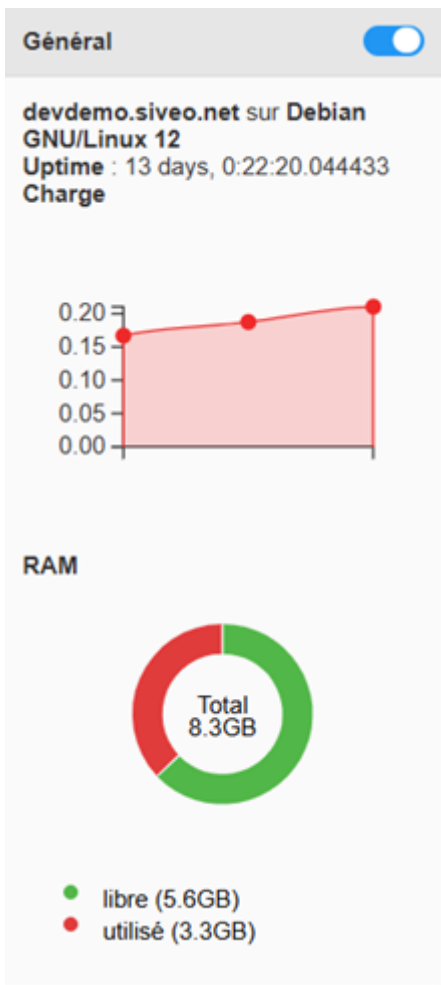
The Medulla dashboard allows you to track the real-time status of your infrastructure with customizable widgets. You can move, resize and organize widgets as you wish. Each widget also has a button to display or hide it, according to your needs.

Some widgets incorporate dynamic graphics for a better understanding of data, updating in real time.

Widgets available

Widgets are categorized by categories and allow you to view various information about your infrastructure. The following are the main categories:

General



Information provided

- **Server name** (example: *devdemo.siveo.net on Debian GNU/Linux 12*)
- **Uptime** (time since last system restart)
- **RAM** Total RAM available, free and used

Customization

This widget can be moved wherever you want, and it is resizable to display more or less information according to your needs. You can also hide it with the toggle if you do not need to see this information permanently.

Graphical representation

The general widget includes **linear graph** for use of **CPU** and one **circular chart** for use of **RAM**, allowing a quick and intuitive visualization of the use of system resources. The RAM chart shows the distribution of the free and used space, while the CPU load chart helps you track the server performance in real time.



Online machines

Information provided

- Total number of machines online and offline.

Customization

This widget can be moved and resized as desired. The toggle allows you to display or hide it according to your preference.

Graphical representation

Circular graph to see the distribution of machines online and offline.



Inventory

Information provided

- Total number of items in the inventory and those not updated for more than 10 days.

Customization

The widget is customizable and can be moved and resized. You can also hide it if you don't need it.

Graphical representation

One **circular chart** shows the items in the inventory, and highlights those requiring updating, thus providing an overview of the inventory status

In summary, the **Dashboard** is your central entry point to manage and monitor the status of your IT infrastructure. It is designed to be **flexible and reactive**, providing an overview of the performance of your machines and resources, while allowing you to react quickly to any necessary alerts or updates.

With this set of tools and **graphical visualizations**, the dashboard gives you optimal control for **managing your systems effectively**, while having a clear and detailed view of your entire IT environment.