

Chapter 2: Getting Started with Medulla

- [How to log in to Medulla](#)
- [Dashboard](#)
- [Updating Medulla via the interface](#)

How to log in to Medulla

To access Medulla's features, you must log in with your credentials. This step ensures the security of your data and personalized access.

Login Steps

A screenshot of the Medulla login interface. At the top, there is a dark blue header with the Medulla logo, which consists of a stylized brain icon made of dots followed by the word "medulla" in lowercase white letters. Below the header, the page is white. There are three main input sections: 1. "LANGUE" (Language): A dropdown menu with "Français" selected and a downward arrow on the right. 2. "IDENTIFIANT" (Username): A light blue rounded rectangular input field containing the text "root". 3. "MOT DE PASSE" (Password): A light blue rounded rectangular input field with ten black dots representing a masked password. At the bottom of these fields is a dark blue button with the white text "Connecter".

Choose your language

On the login page, select your preferred language from the dropdown menu. The default language is French, but you can change it if necessary.

Enter your username

Enter the username or email address you provided when creating your account.

Enter your password

In the Password field, enter your personal password. Make sure it is spelled correctly: uppercase and lowercase letters are distinguished.

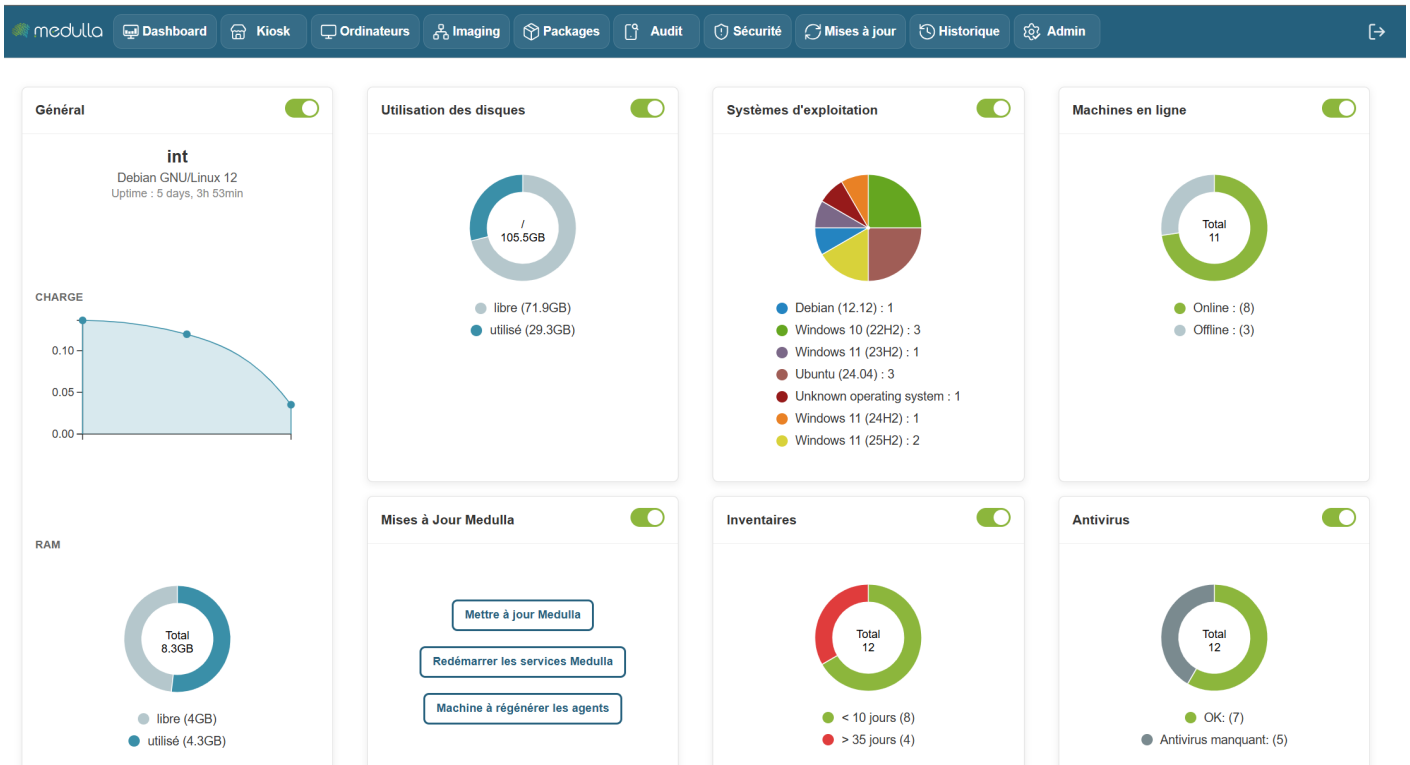
Confirm the login

Click the "Log In" button to access your user account.

For security reasons, avoid saving your password on shared devices.

If you have trouble logging in, contact your organization's technical support

Dashboard



The Medulla dashboard allows you to monitor the real-time status of your infrastructure using customizable widgets. You can move, resize, and arrange the widgets as you wish. Each widget also has a button to show or hide it, depending on your needs.

Some widgets include dynamic charts for a better understanding of the data, updating in real time.

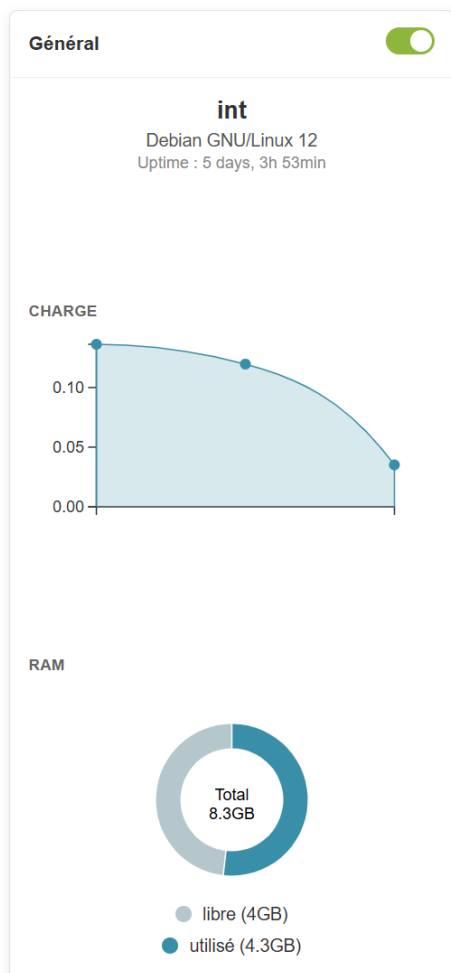
The following widgets allow you to create static groups directly so you can perform actions on them by clicking:

Inventory Widget, Operating System, Online Machines, Antivirus

Available Widgets

Widgets are organized by category and allow you to view various information about your infrastructure. Here are the main categories:

General



Information provided

- **Server name** (example: *devdemo.siveo.net* on *Debian GNU/Linux 12*)
- **Uptime** (time elapsed since the last system reboot)
- Total**RAM**, available RAM, and used RAM

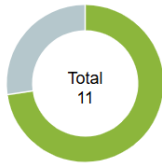
Customization

This widget can be moved wherever you like, and it is resizable to display more or less information depending on your needs. You can also hide it using the toggle if you don't need to see this information all the time.

Graphical representation

The General widget includes a **line chart** for **CPU usage** and a **pie chart** for **RAM usage**, allowing for a quick and intuitive visualization of system resource usage. The RAM chart shows the distribution of free and used space, while the CPU load chart helps you monitor server performance in real time.

Machines en ligne



- Online : (8)
- Offline : (3)

Online machines

Information provided

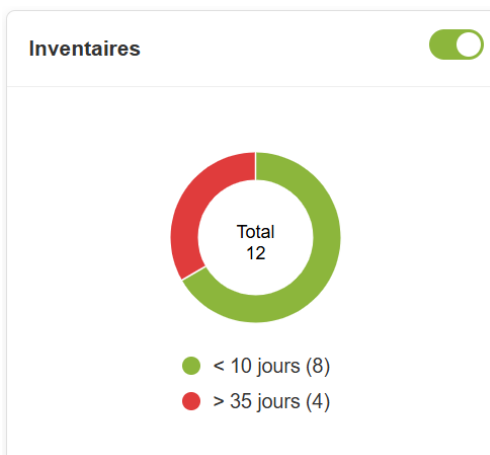
- Total number of online and offline machines.

Customization

This widget can be moved and resized as you like. The toggle allows you to show or hide it according to your preference.

Graphical representation

Pie chart to visualize the distribution of online and offline machines.



Inventory

Information provided

- Total number of items in the inventory and those that haven't been updated in over 10 days.

Customization

The widget is customizable and can be moved and resized. You can also hide it if you don't need it.

Graphical representation

A **pie chart** displays the items in the inventory and highlights those requiring an update, providing an overview of the inventory's status

In summary, the **Dashboard** is your centralized hub for managing and monitoring the status of your IT infrastructure. It is designed to be **flexible and responsive**, providing an overview of the performance of your machines and resources, while allowing you to react quickly to any alerts or necessary updates.

With this set of tools and **graphical visualizations**, the Dashboard gives you optimal control to **manage your systems efficiently**, while providing a clear and detailed view of your entire IT environment.

Updating Medulla via the interface

In the Medulla dashboard, an "Update Medulla" widget is available:

This widget allows you to:

- Check for Medulla version updates
- View Medulla version updates;
- Install Medulla version updates
- Restart Medulla services after updates
- Restart Medulla agents after updates

On the widget, click the Check for Updates button.



A popup will appear asking you to confirm the update, with backup requirements.

⚠ SAUVEGARDE REQUISE AVANT MISE À JOUR

Avant d'exécuter cette mise à jour, il vous appartient de :

- ✓ Créer une sauvegarde complète de vos données
- ✓ Effectuer un snapshot du système (si applicable)
- ✓ Sauvegarder les fichiers de configuration
- ✓ Vérifier que vous disposez d'un point de restauration fonctionnel

- Cette mise à jour modifiera le système de manière irréversible
- En cas d'échec, une restauration sera nécessaire
- Aucun retour en arrière automatique n'est disponible

Annuler

J'accepte, lancer la mise à jour

There are 2 buttons on the popup

- Cancel
- I Accept, Start Update.

When you click Start Update, the pop-up displays:

Installation des mises à jour en cours..



Once the update is complete, Medulla will force a logout from the interface.

Once you reconnect to Medulla, still within the Updates widget, please click the "Restart Medulla Services" button.

Redémarrer les services Medulla

The session will be terminated; you will then need to reconnect to the interface.

Click the "Regenerate Agents" button.

Machine à régénérer les agents

The page will then display the following screen:

